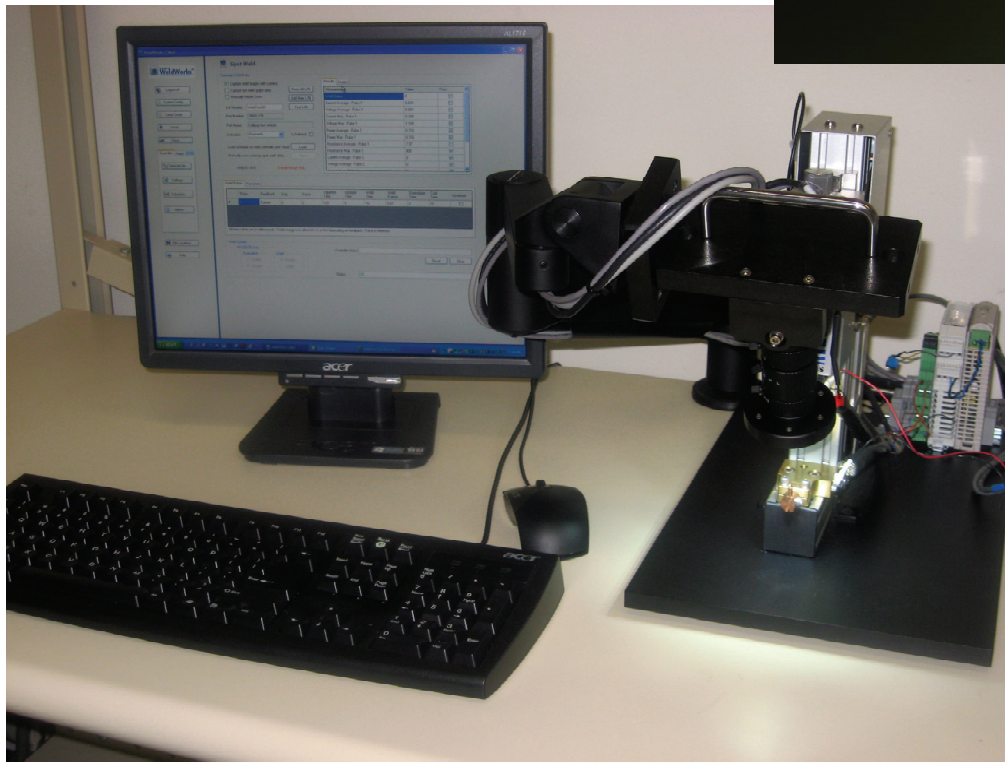
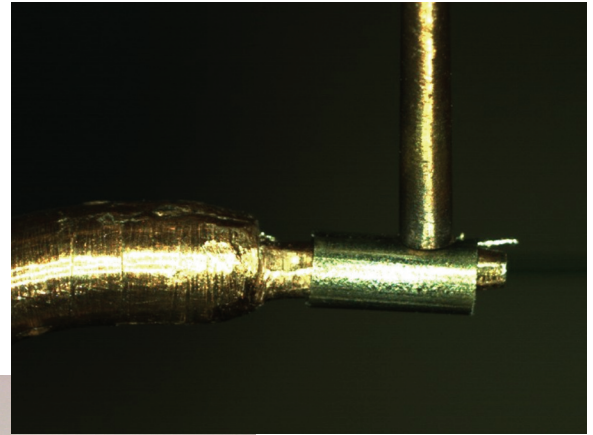


WeldWorks Vision Kit – “A Picture is Worth a Thousand Words”

Features

- High resolution, digital CMOS color camera
- Simple USB connection controls camera and LED light
- Variable magnification zoom lens
- High brightness LED spot lights or ring light
- Two channel LED light driver remotely adjust light intensity
- WeldWorks Software Suite
- System works with any weld head



Benefits

- Improve ergonomics by eliminating operator viewing fatigue associated with traditional microscope
- Live video image along side of WeldWorks software application lets operators accurately place parts and check electrode alignment prior to weld.
- Automatically snaps preweld and post weld images and saves them to database
- Articulating arm to position camera with locks to hold it in place
- LED lights have long life, run cool, and consume much less power compared to bulky halogen or xenon lamps
- WeldWorks Software Suite manages all your controllers, weld schedules, parts, users, process data and weld images across the enterprise

Kit Specifications

Item	Manufacturer	Model	Specifications
Digital Camera	Mightex	MLE-C030-U	<ul style="list-style-type: none"> • Mega pixel resolution • Color CMOS imager, progressive scan • USB 2.0 communication • 8-bit depth • Easy to use image acquisition app.
Zoom Lens	Computar	MLM-3XMP or MLH-10X	<ul style="list-style-type: none"> • Short working distance • 3X or 10X macro zoom lens • C-Mount • F4.5 (MLM) or F5.6 (MLH) aperture
LED Light	techMatrix (spot) or CCS America (ring)	SL series (spot) or LDR2 series (ring)	<ul style="list-style-type: none"> • High brightness LED's • White, red, blue, or green • Spot lights or ring light available • 100,000 hour operating life
LED Driver	Mightex	SLA series	<ul style="list-style-type: none"> • 2 independent channels • Analog intensity control (remote using a 0-5 VDC signal from camera) • 8-bit resolution • 24 VDC input voltage
WeldWorks Software	techMatrix	WeldWorks	<ul style="list-style-type: none"> • Centrally manage all weld schedules • Store data and perform SPC and statistical analysis • Access anywhere via internet • Complete traceability • Save weld & destructive test images

- PC or laptop (not included in kit) is required to run the WeldWorks Software
- Advanced Cognex vision gauging software (not included in kit) is available as an additional option – please contact techMatrix sales for details.

The standard WeldWorks Vision Kit includes a color camera, zoom lens, LED lights, LED light driver, and a license to our WeldWorks Software Suite as shown below:



Founded in spring 2005, techMatrix LLC is a dynamic, growth stage company dedicated to designing, building, and assembling both custom and standard PC based micro-joining equipment for high technology companies.

Specifications are subject to change without notice. Copyright 2009-2011, techMatrix, LLC. All rights reserved.